

LAND SALE NUMBER EIGHT

Location: East line of Springdale Road, between US 290
East and Commercial Park.

Date of Sale: October 24, 2006

Recording Data: Document #200609545, Deed Records of Travis
County, Texas

Map Grid / Zip Code: 557/78724

Legal Description: Lot 1, Block A, Ferguson Commercial Section 1,
a subdivision in Travis County, Texas, according
to the map or plat of record in Volume 97, Page
378, Plat Records of Travis County, Texas.
Together with a 20' non-exclusive easement for
vehicular ingress and egress over and across a
portion of Lot 1, Northeast Commercial Business
Park Section One, a subdivision in Travis County,
Texas as described in Volume 12444, Page 1154,
Real Property Record of Travis County, Texas.

Parcel ID #: 02-2930-0508

Grantor: Cleon R. Yates and wife Juda B. Yates

Grantee: Ly Holdings, Inc.

Size: 4.072 acres or 177,376 SF

Consideration: \$450,000 (confirmed)

Price/SF: \$2.54/SF (calculated)

Zoning: I-RR

Topography: Generally level to gently rolling

Shape: Rectangular

Frontage: Springdale Road.- 388'

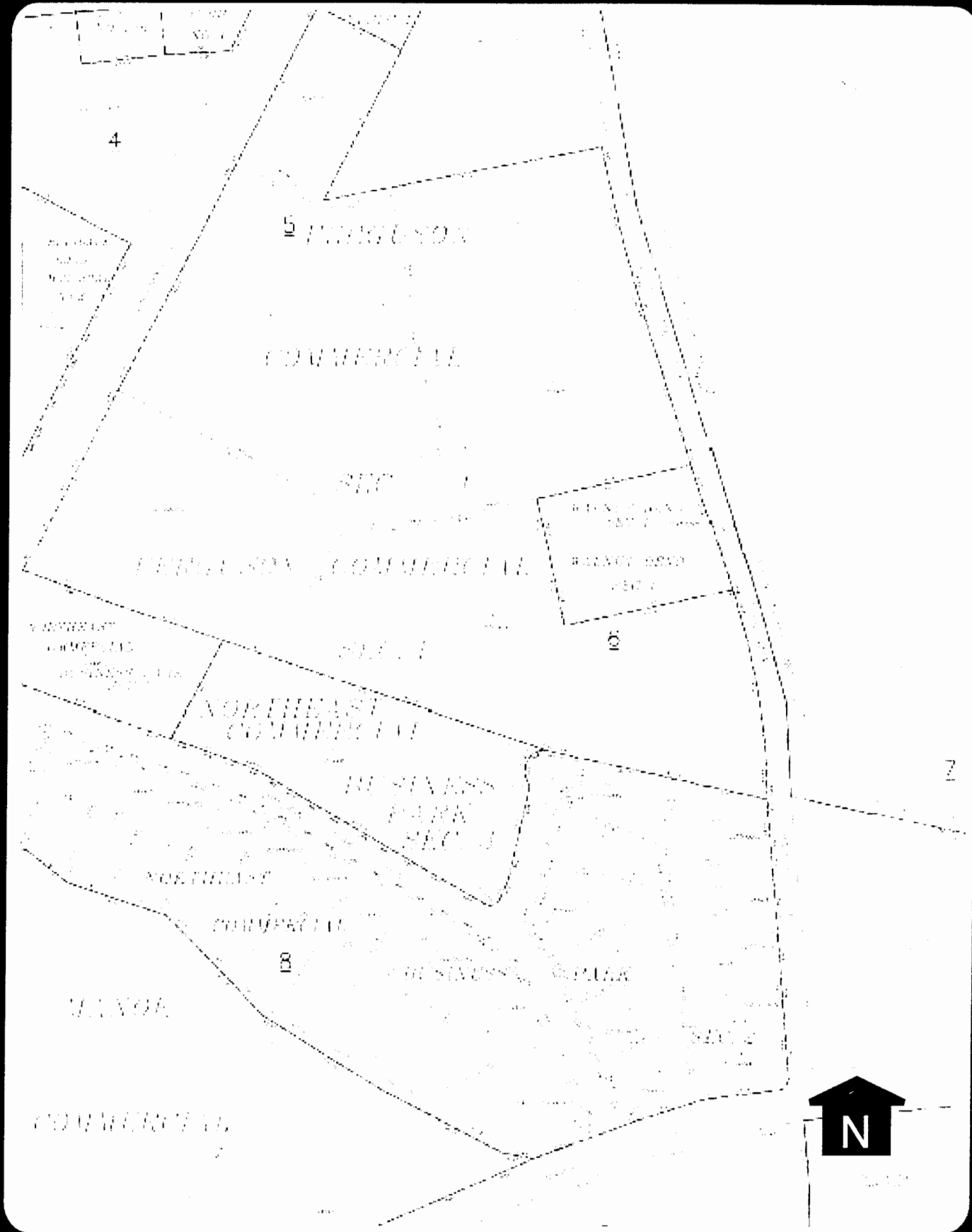
Utilities: All available

Flood Plain: None

Proposed Use: Investment for future commercial development

Comments: Property was originally listed for \$475,000.

Confirmation: Joseph Goergen (Broker), 10/07 (JAW).



LAND SALE NUMBER 8

TaxNetUSA: Travis County Property Information

Property ID Number: **426059** Ref ID2 Number: **02293005080000**

Owner's Name **LY HOLDINGS INC**

Mailing Address **48475 ARKANSAS PL
FREMONT, CA 94539-7702**

Location **8115 SPRINGDALE RD 78724**

Legal **LOT 1 BLK A FERGUSON COMMERCIAL SEC 1**

Property Details

Deed Date 10242006
 Deed Volume
 Deed Page
 Exemptions
 Freeze Exempt F
 ARB Protest F
 Agent Code 0
 Land Acres 4.0720
 Block A
 Tract or Lot 1
 Docket No.
 Abstract Code S04514
 Neighborhood Code #NEA

Value Information

2009 Preliminary

Land Value 248,326.00
 Improvement Value 0.00
 AG Value 0.00
 AG Productivity Value 0.00
 Timber Value 0.00
 Timber Productivity Value 0.00
 Assessed Value 248,326.00
 10% Cap Value 0.00
 Total Value 248,326.00

Data up to date as of 2009-04-20

- AGRICULTURAL (1-D-1)
 - APPOINTMENT OF AGENT FORM
 - FREEPORT EXEMPTION
 - HOMESTEAD EXEMPTION FORM
 - PRINTER FRIENDLY REPORT
 - PROTEST FORM
 - RELIGIOUS EXEMPTION FORM
 - PLAT MAP
 - PLAT MAP
- (TIFF) (PDF)

Value By Jurisdiction

Entity Code	Entity Name	2008 Tax Rate	Assessed Value	Taxable Value	Market Value	Appraised Value
0A	TRAVIS CENTRAL APP DIST		248,326.00	248,326.00	248,326.00	248,326.00
01	AUSTIN ISD	1.202000	248,326.00	248,326.00	248,326.00	248,326.00
02	CITY OF AUSTIN	0.401200	248,326.00	248,326.00	248,326.00	248,326.00
03	TRAVIS COUNTY	0.412200	248,326.00	248,326.00	248,326.00	248,326.00
2J	TRAVIS CO HEALTHCARE DIST	0.067900	248,326.00	248,326.00	248,326.00	248,326.00
68	AUSTIN COMM COLL DIST	0.095400	248,326.00	248,326.00	248,326.00	248,326.00

Improvement Information

Improvement ID State Category Description

Segment Information

Imp ID Seg ID Type Code Description Class Effective Year Built Area
 Total Living Area 0

Land Information

Land ID Type Code SPTB Code Homesite Size-Acres Front Depth Size-Sqft
 378052 LAND C1 F 4.072 0 0 177,376

Certified Value History

Year	Jur	Entity Name	Assessed Value	Taxable Value
2008				
2008	0A	TRAVIS CENTRAL APP DIST	248,326.00	248,326.00
2008	01	AUSTIN ISD	248,326.00	248,326.00
2008	02	CITY OF AUSTIN	248,326.00	248,326.00
2008	03	TRAVIS COUNTY	248,326.00	248,326.00
2008	2J	TRAVIS CO HEALTHCARE DIST	248,326.00	248,326.00
2008	68	AUSTIN COMM COLL DIST	248,326.00	248,326.00
2007				
2007	0A	TRAVIS CENTRAL APP DIST	248,326.00	248,326.00
2007	01	AUSTIN ISD	248,326.00	248,326.00
2007	02	CITY OF AUSTIN	248,326.00	248,326.00
2007	03	TRAVIS COUNTY	248,326.00	248,326.00
2007	2J	TRAVIS CO HEALTHCARE DIST	248,326.00	248,326.00
2007	68	AUSTIN COMM COLL DIST	248,326.00	248,326.00
2006				

2006	0A	TRAVIS CENTRAL APP DIST	248,326.00	248,326.00
2006	01	AUSTIN ISD	248,326.00	248,326.00
2006	02	CITY OF AUSTIN	248,326.00	248,326.00
2006	03	TRAVIS COUNTY	248,326.00	248,326.00
2006	2J	TRAVIS CO HEALTHCARE DIST	248,326.00	248,326.00
2006	68	AUSTIN COMM COLL DIST	248,326.00	248,326.00
		2005		
2005	0A	TRAVIS CENTRAL APP DIST	177,376.00	177,376.00
2005	01	AUSTIN ISD	177,376.00	177,376.00
2005	02	CITY OF AUSTIN	177,376.00	177,376.00
2005	03	TRAVIS COUNTY	177,376.00	177,376.00
2005	2J	TRAVIS CO HEALTHCARE DIST	177,376.00	177,376.00
2005	68	AUSTIN COMM COLL DIST	177,376.00	177,376.00
		2004		
2004	0A	TRAVIS CENTRAL APP DIST	177,376.00	177,376.00
2004	01	AUSTIN ISD	177,376.00	177,376.00
2004	03	TRAVIS COUNTY	177,376.00	177,376.00
2004	2J	TRAVIS CO HOSPITAL DIST	177,376.00	177,376.00
2004	57	TRAVIS CO ESD NO 4	177,376.00	177,376.00
2004	68	AUSTIN COMM COLL DIST	177,376.00	177,376.00
		2003		
2003	0A		177,376.00	177,376.00
2003	01		177,376.00	177,376.00
2003	03		177,376.00	177,376.00
2003	57		177,376.00	177,376.00
2003	68		177,376.00	177,376.00
		2002		
2002	0A		177,376.00	177,376.00
2002	01		177,376.00	177,376.00
2002	03		177,376.00	177,376.00
2002	57		177,376.00	177,376.00
2002	68		177,376.00	177,376.00
		2001		
2001	0A		177,376.00	177,376.00
2001	01		177,376.00	177,376.00
2001	03		177,376.00	177,376.00
2001	57		177,376.00	177,376.00
2001	68		177,376.00	177,376.00
		2000		
2000	01		177,376.00	177,376.00
2000	03		177,376.00	177,376.00
2000	57		177,376.00	177,376.00
2000	68		177,376.00	177,376.00